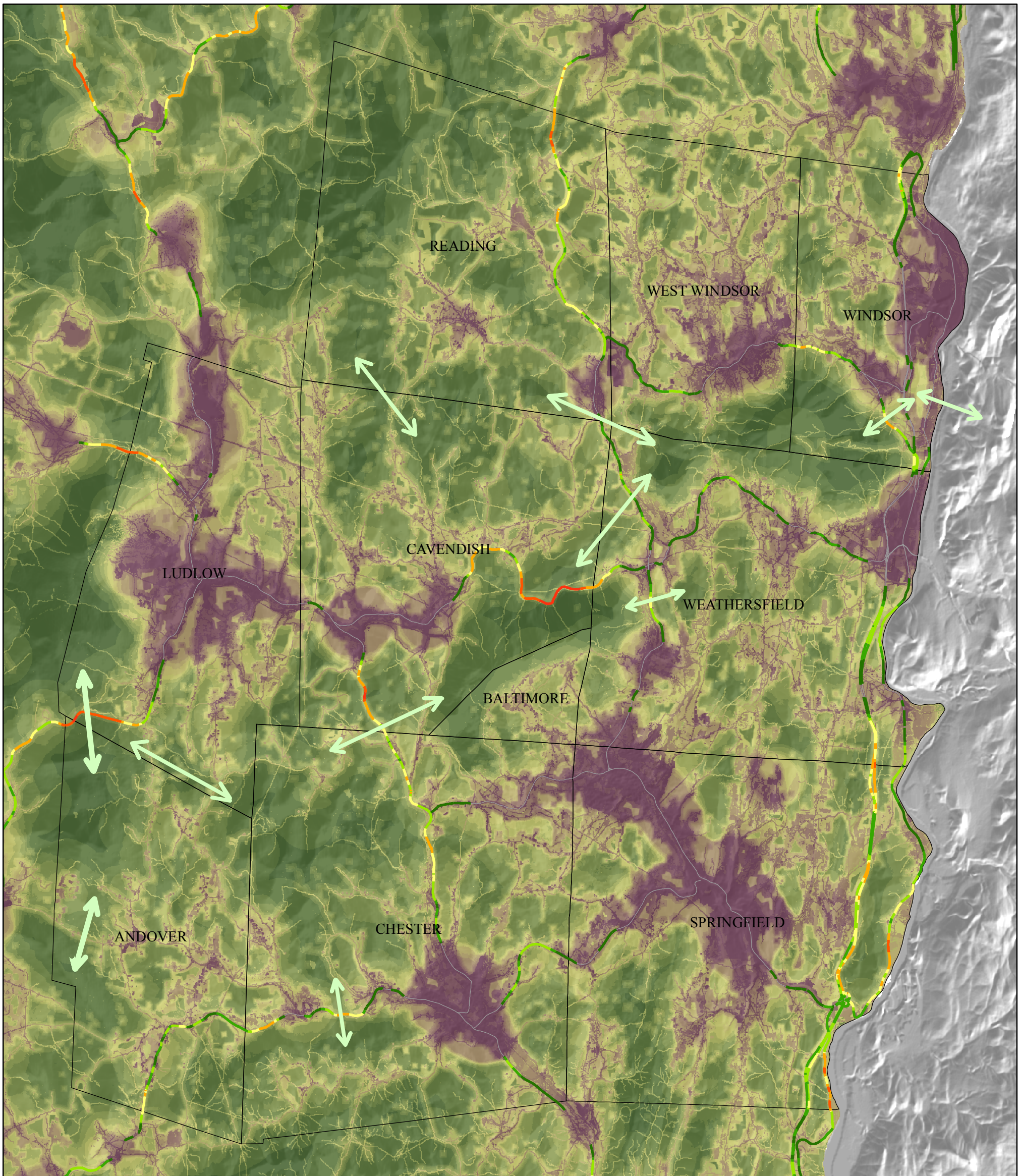


**Map 6**  
**2014 Regional Plan**

Effective Date: December 23, 2014

# Southern Windsor County Region of Vermont

*Wildlife Suitability and Corridor Ratings*



High : 10  
 Low : 0.6  
 Wildlife Suitability Analysis is a predictive model based on 1) population density 2) Land Use/Land Cover and 3) core forest blocks. Darker greens indicate areas that have a greater probability of being good habitat for wildlife. It does not show actual habitat quality. VT Fish & Wildlife and VTTrans, 2006.

**Wildlife Crossing Value**

Class I, State Highways and Interstate

Wildlife Linkage Habitats: 1) these areas are likely to be important road crossings and appear important to regional wildlife habitat connectivity at a landscape scale, but 2) that their identification is based on remote sensing. Precise identification of these crossing areas should be done in the field with the help of trained wildlife biologists.

0 1.5 3 6 Miles

VT State Plane,  
Meters, NAD 83

For planning purposes only.  
Not for regulatory interpretation.

for info & data - [www.vcgi.org](http://www.vcgi.org)

Southern Windsor County  
Regional Planning Commission

SWCRPC  
PO BOX 320  
Ascutney, VT 05030  
802.674.9201  
[www.swcrpc.org](http://www.swcrpc.org)