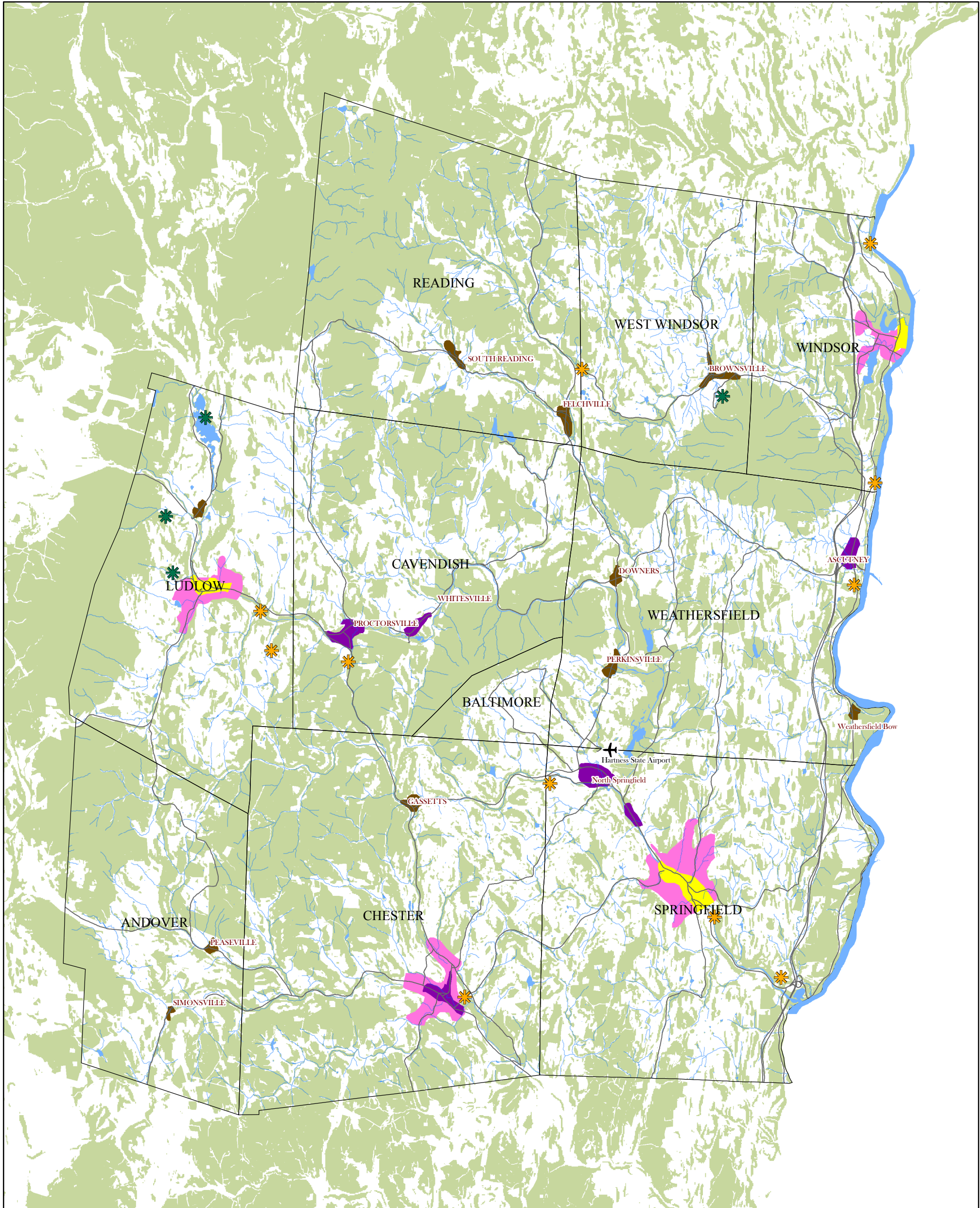


# Map 3 2014 Regional Plan

Effective Date: December 23, 2014

# Southern Windsor County Region of Vermont Future Land Use



**Future Land Use Categories**


- Regional Center
- Town Center
- Village Center and Hamlet
- Medium-Density Neighborhood
- Resort Center and Recreational Area
- Industrial Site
- Rural
- Resource

Sources: Future Land Use - Eight (8) land use categories established by SWCRPC in conjunction with Land Use Focus Group formed for the 2009 Regional Plan update. Resource category includes; slopes >25%, elevation >2500 ft., prime agricultural soils (NRCS), floodway (FEMA), publicly conserved lands (UVM SAL), NWI wetlands, and Wildlife Suitability Analysis (high suitability - GRIDCODE 8-10) (VT Fish & Wildlife and Vtrans, 2006).

0 1.25 2.5 5 Miles


VT State Plane, Meters, NAD 83

For planning purposes only. Not for regulatory interpretation.



for info & data - [www.vcgi.org](http://www.vcgi.org)

Southern Windsor County Regional Planning Commission



SWCRPC  
PO BOX 320  
Ascutney, VT 05030  
802.674.9201  
[www.swcrpc.org](http://www.swcrpc.org)