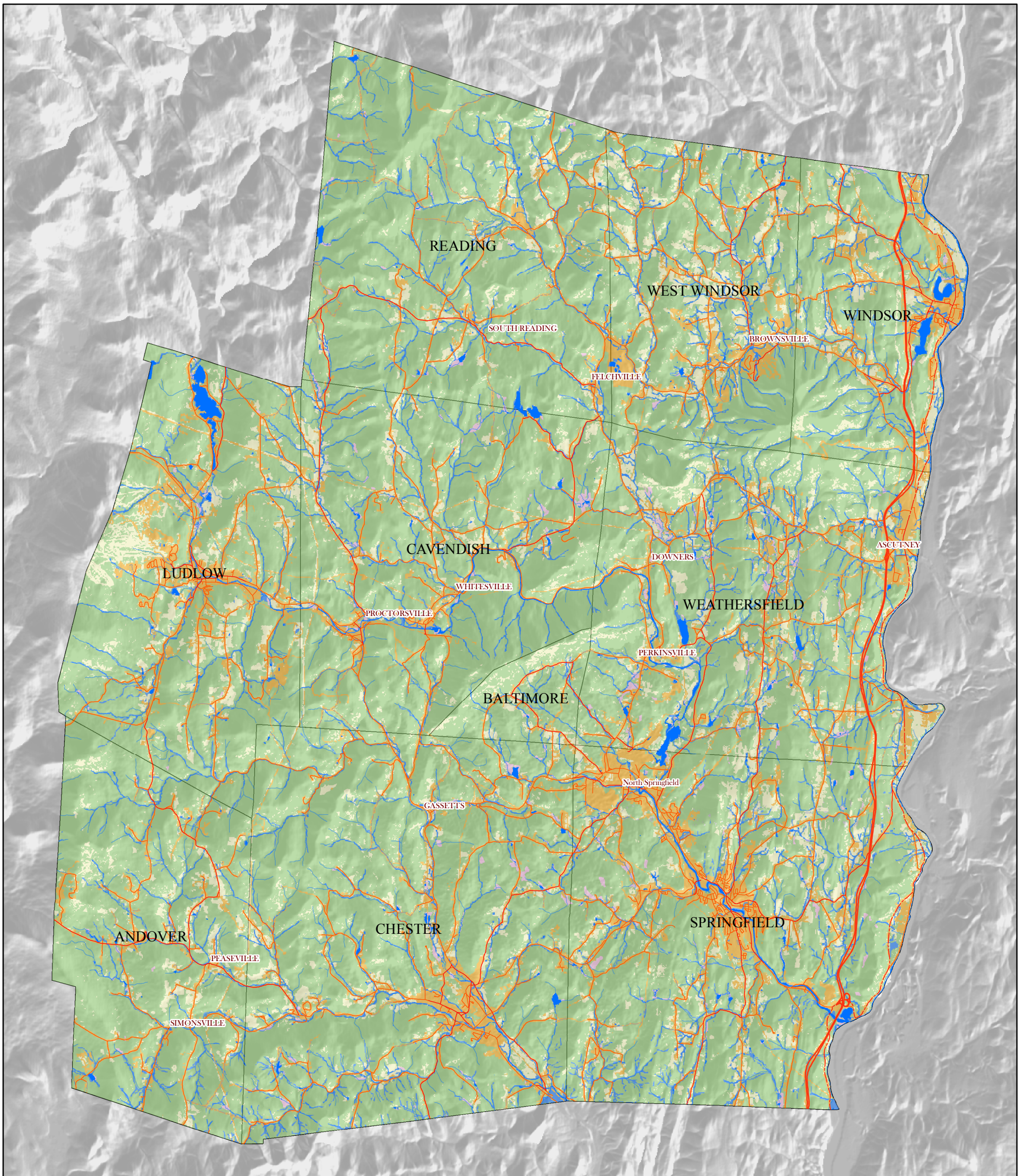


Map 1 2014 Regional Plan

Effective Date: December 23, 2014

Southern Windsor County Region of Vermont

Generalized 2002 Land Use & Land Cover



Land Cover		Roads	
	water		Class I TH
	open, pasture, ag.		Class II TH
	developed		Class III TH
	forest		Class IV TH
	wetland		Vermont State Highway
			US Highway
			Interstate

0 1.5 3 6 Miles



VT State Plane,
Meters, NAD 83

For planning purposes only.
Not for regulatory interpretation.

for info & data - www.vcgl.org

Southern Windsor County
Regional Planning Commission

SWCRPC
PO BOX 320
Ascutney, VT 05030
802.674.9201
www.swcrpc.org

Source: Land Cover classes generated from 2002 LANDSAT imagery and generalized by SWCRPC.