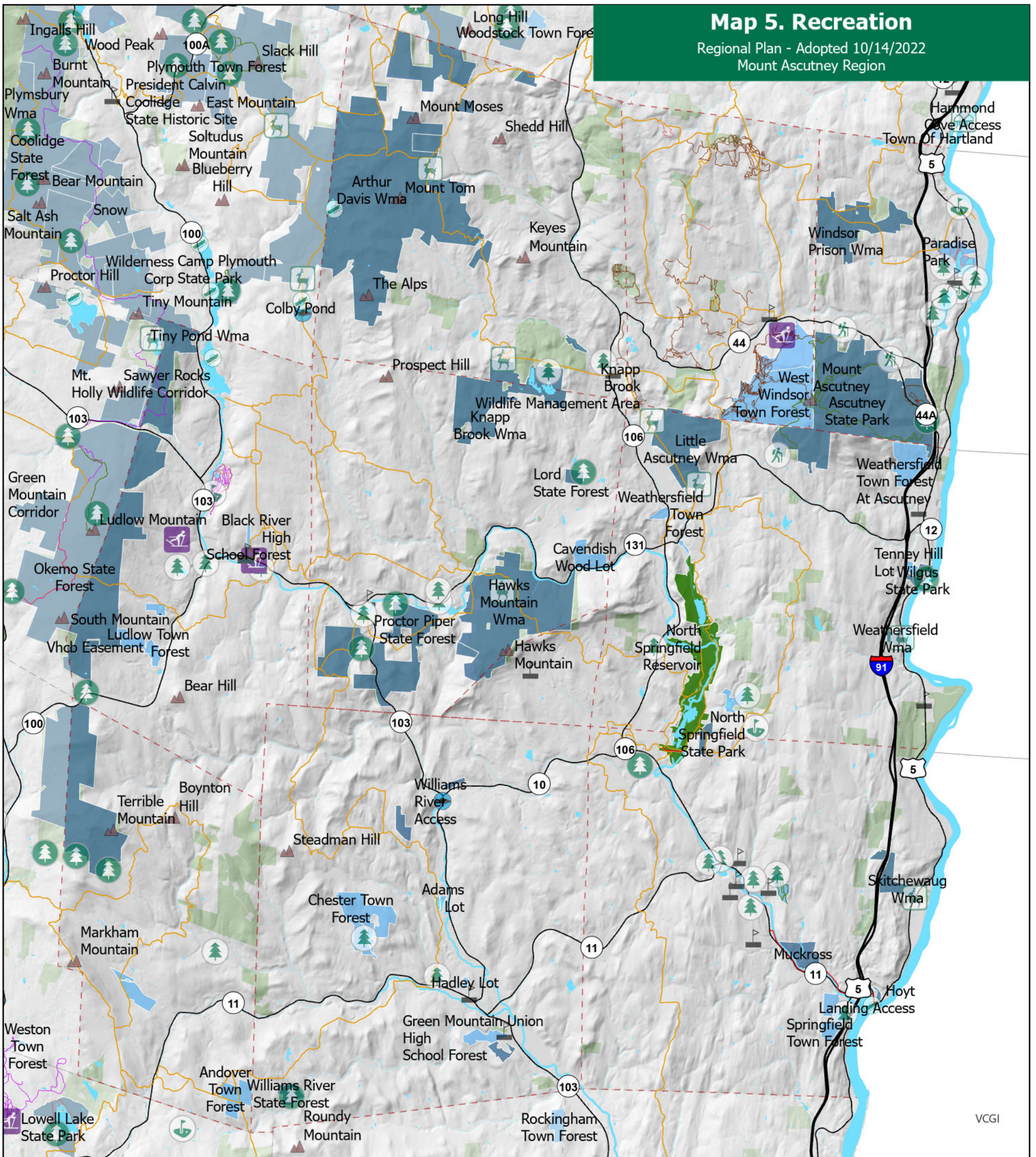


Map 5. Recreation

Regional Plan - Adopted 10/14/2022
Mount Ascutney Region



Outdoor Recreation Sites

- Town Park/Forest/Recreation Area
- Trail Head
- State/Federal Park/Forest/Rec Area
- Golf Course
- Swimming Hole
- Lake or River Access
- School
- WMA
- Other notable recreation site
- Fishing Access
- Ski Area

Trails

- Hiking Trails
- Mountain Bike Trails
- Multi-Use Trails (Non-Motorized)
- Toonerville Trail
- Snowmobile Trails
- Ski Trails

Conserved Land

- Federal
- State
- Municipal
- Lakes and Ponds
- Major River
- Summit

Roads

- Interstate
- US and State Highway; and Class 1 Town Highway

0 1 2 3 4 5 Miles

0 1 2 3 4 5 Kilometers

1 inch equals 2 miles



Data Sources:

Recreation Sites (ANR, 2016);
Boundaries (VCGI, 2016; NH Granit, 2014);
Roads (VTrans, 2019); Waterbodies (VCGI 2019);
Trails (E911, 2018); Conserved Land (VCGI, 2019);
Summits (GNIS, 2019)

Please note that this map does not show an exhaustive list of recreation resources - only locations which we currently have GIS data for or are of regional significance. Please see Town Plans and websites for more detailed information of local resources.



PO Box 320, Ascutney, VT 05030
www.marvcvt.org

VT State Plane, Meters, NAD 83

Map drawn: February 24, 2021
Plan Adopted: October 14, 2022
Plan Effective: November 18, 2022