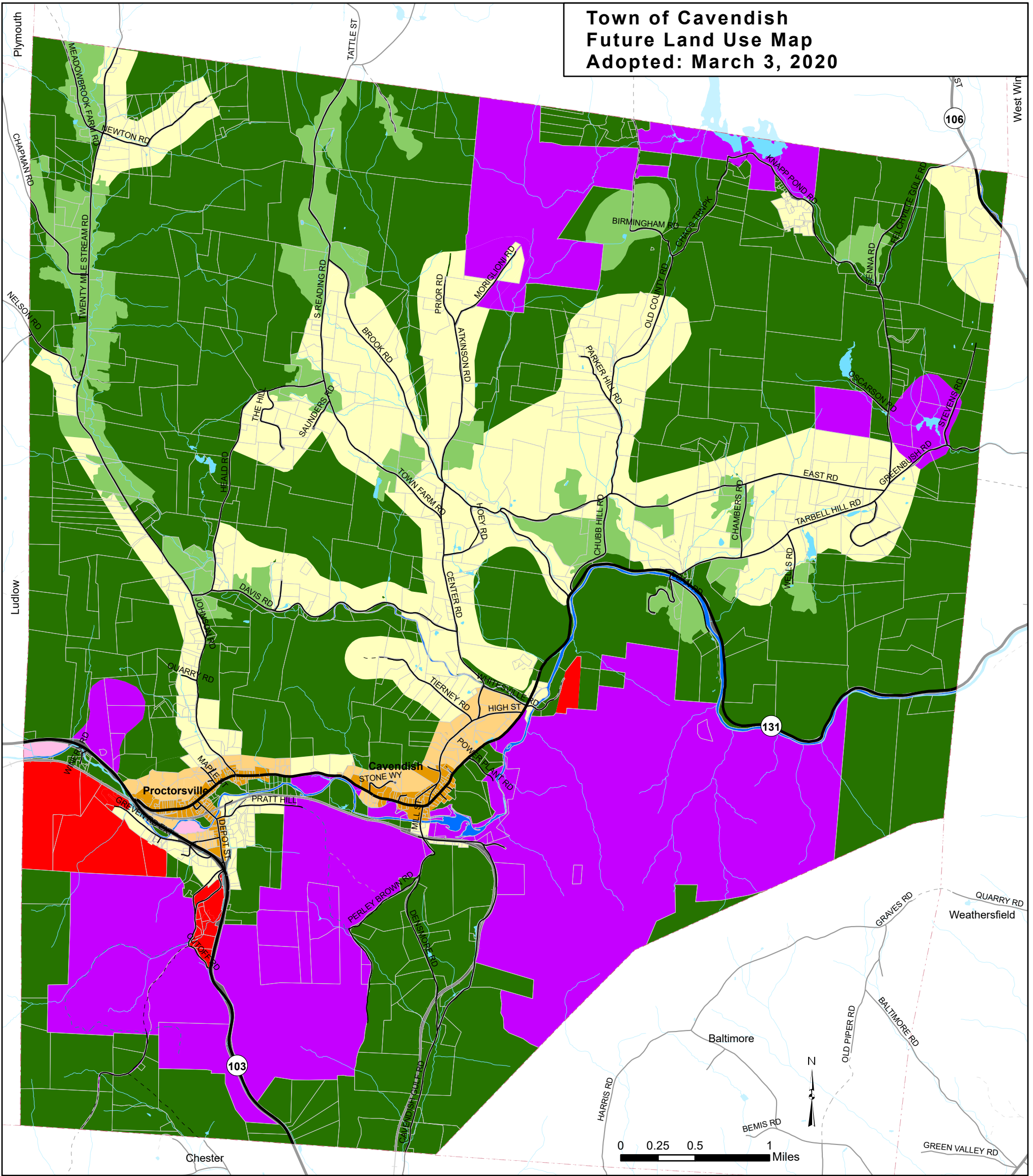
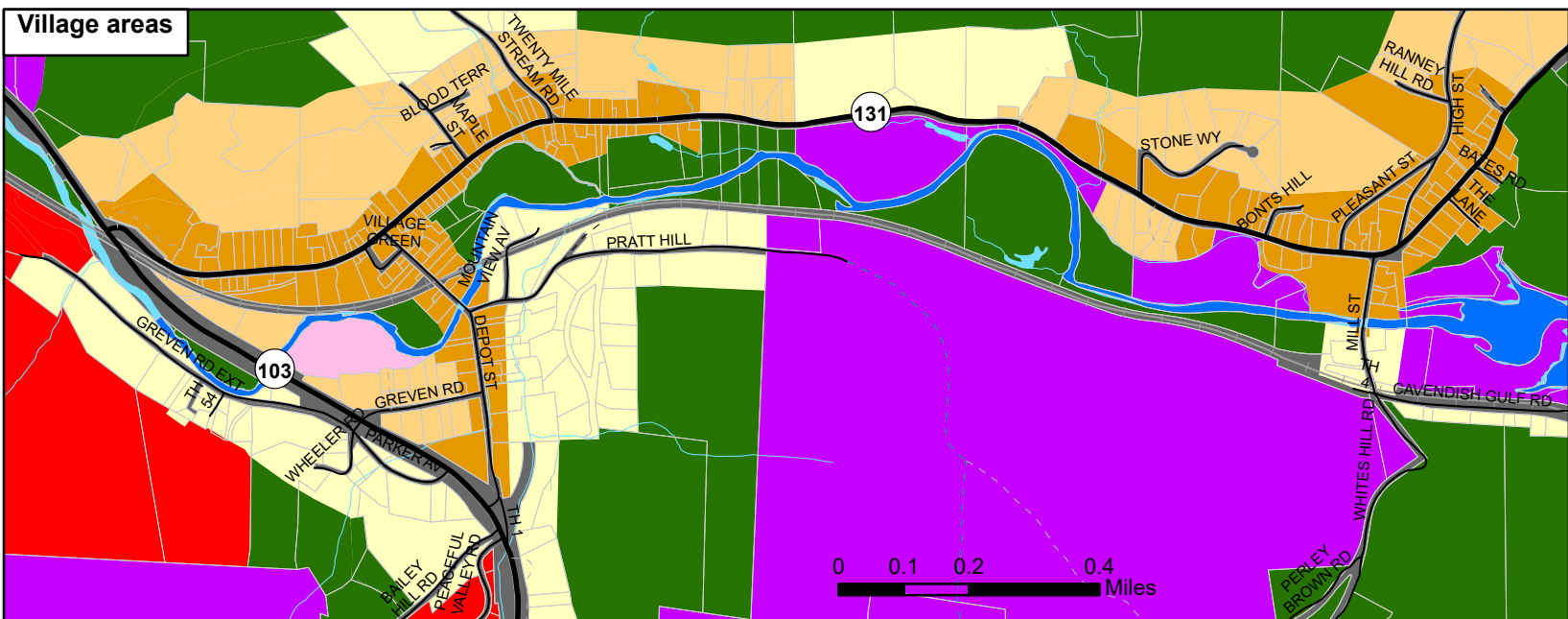


**Town of Cavendish
Future Land Use Map
Adopted: March 3, 2020**



- | | | | |
|-----------------------------------|--------------|--------------------------------|--------------------------|
| Future Land Use Categories | Conservation | VT State Highway | Railroads |
| Village Center | Agriculture | Class 2 and 3 Town Highway | Rivers and Streams |
| Village Neighborhood | Forest | Class 4 Town Hwy & Legal Trail | Other Lakes and Ponds |
| Rural Residential | Right of Way | Private Road | Parcels (Cavendish only) |
| Industrial | Water | State Forest Road | Town Boundary |
| Recreation | | | |



Data Sources:
Future Land Use (RPC 2015 draft),
Railroad (VTrans 2003), Road
centerline (VTrans 2013), Town
Boundary (RPC 2014 using Parcels
2009), Parcels (Cartographic
Associates 2009).

VT State Plane, Meters, NAD 83
Data depicted on this map are for
planning purposes only and are
based on best available information.
Some of the data do not line up.



P.O. Box 320, Ascutney, VT 05030
802-674-9201 www.swcrpc.org

For planning purposes only
Not for regulatory interpretation
Adopted March 3, 2020