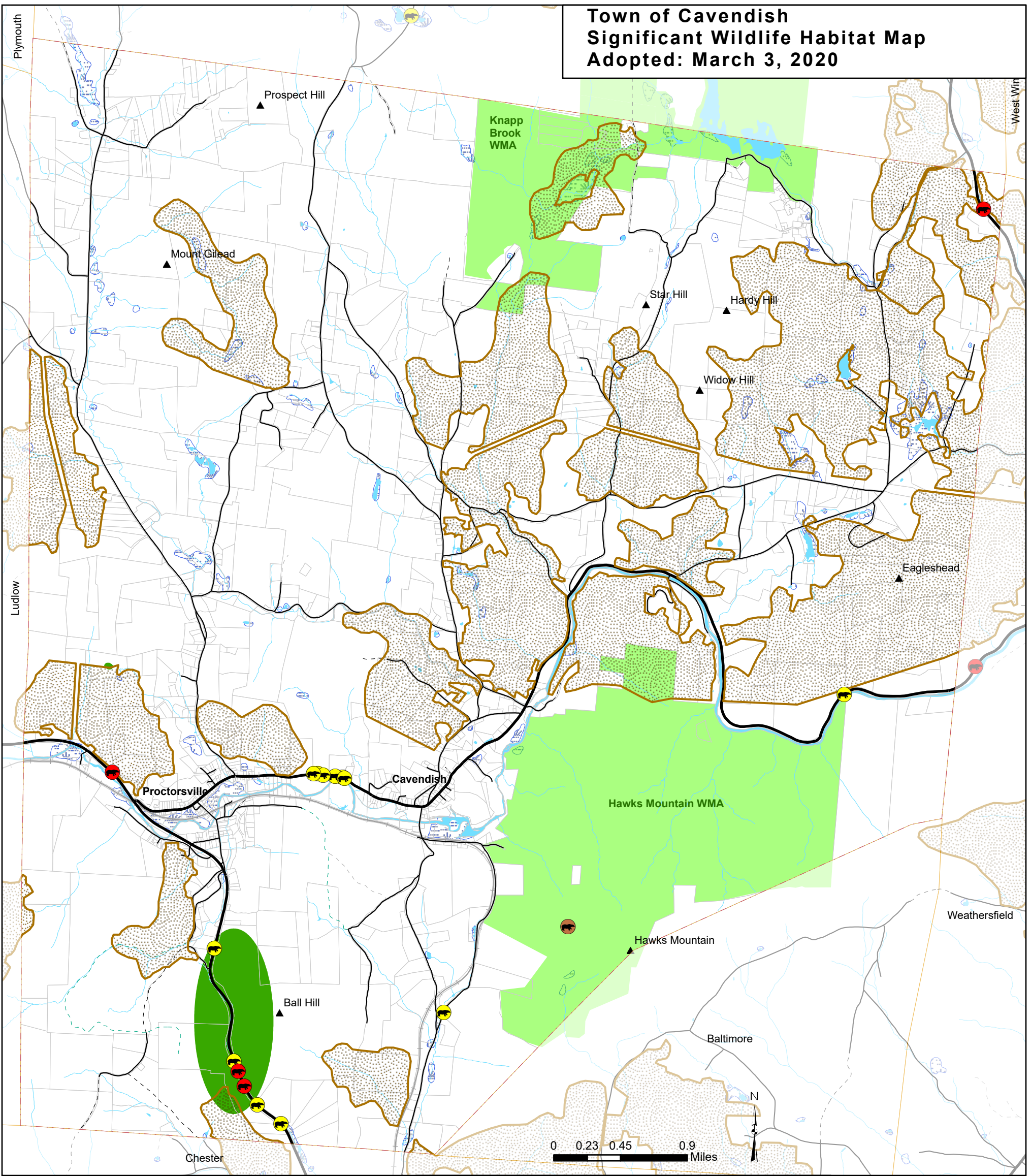
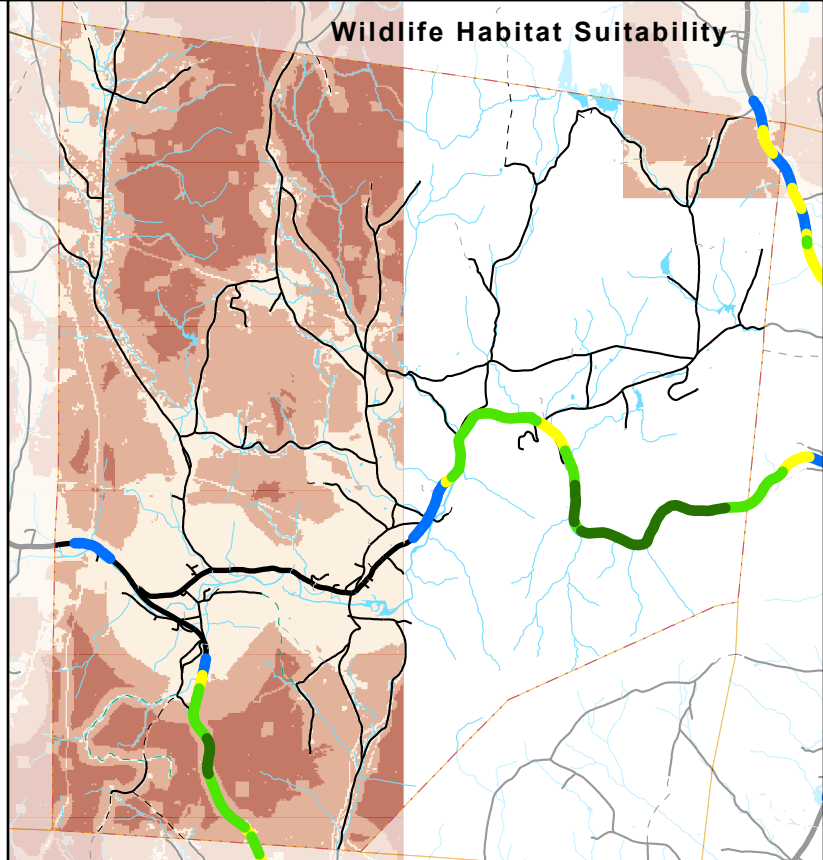


Town of Cavendish Significant Wildlife Habitat Map Adopted: March 3, 2020



- Bear Collision
 - Bear Crossing Area
 - Bear Mast
 - Deer Wintering Area
 - Wetlands (VSWI)
 - Wildlife Management Area
 - State Threatened Species
- Layer**
- Hill/ Mountain Summit
 - VT State Highway
 - Class 2 and 3 Town Highway
 - Class 4 Town Hwy & Legal Trail
 - Private Road
 - State Forest Road
 - Railroads
 - Parcels (Cavendish only)
 - Cavendish town boundary
 - Other town boundary
- Wildlife Crossing Value (out of 10) (small map only)**
- 5 - 5.5
 - 6 - 6.5
 - 7 - 7.5
 - 8 - 8.5



Data Sources: Threatened and Endangered Species (ANR 2013), Wetlands (VT Significant Wetlands Inventory, ANR 2010), Wildlife Management Area (ANR 2012), Bear Collision (ANR 2004), Bear Crossing Area (ANR 2004), Bear Mast (ANR 2001), Deer Wintering Area (ANR 2011), Wildlife Crossing Value (VT Dept of Fish and Wildlife (VDFW) 2006), Wildlife Habitat Suitability (VDFW 2006), Waterbodies (VHD 2008), Railroad (VTrans 2003), Hill/ Mountain Summit (Unknown Source), Road centerline (VTrans 2013), Town Boundary (RPC 2014 using Parcels 2009), Parcels (Cartographic Associates 2009).

VT State Plane, Meters, NAD 83
Data depicted on this map are for planning purposes only and are based on best available information. Some of the data do not line up.



P.O. Box 320, Ascutney, VT 05030
802-674-9201 www.swcrpc.org

For planning purposes only
Not for regulatory interpretation
Adopted March 3, 2020

Note: Some data, eg wetlands, is incomplete. Further study may be needed prior to applying for permits to develop or make changes to the land.

The following data has no areas currently mapped in Cavendish: Bear Wetland Feeding Areas (ANR 2001), Bear Nuisance (ANR 2004), Rare or Endangered Species (ANR 2013) and Wetlands (Class 3). This could mean that the habitat/ species do not exist or that they have not yet been mapped.