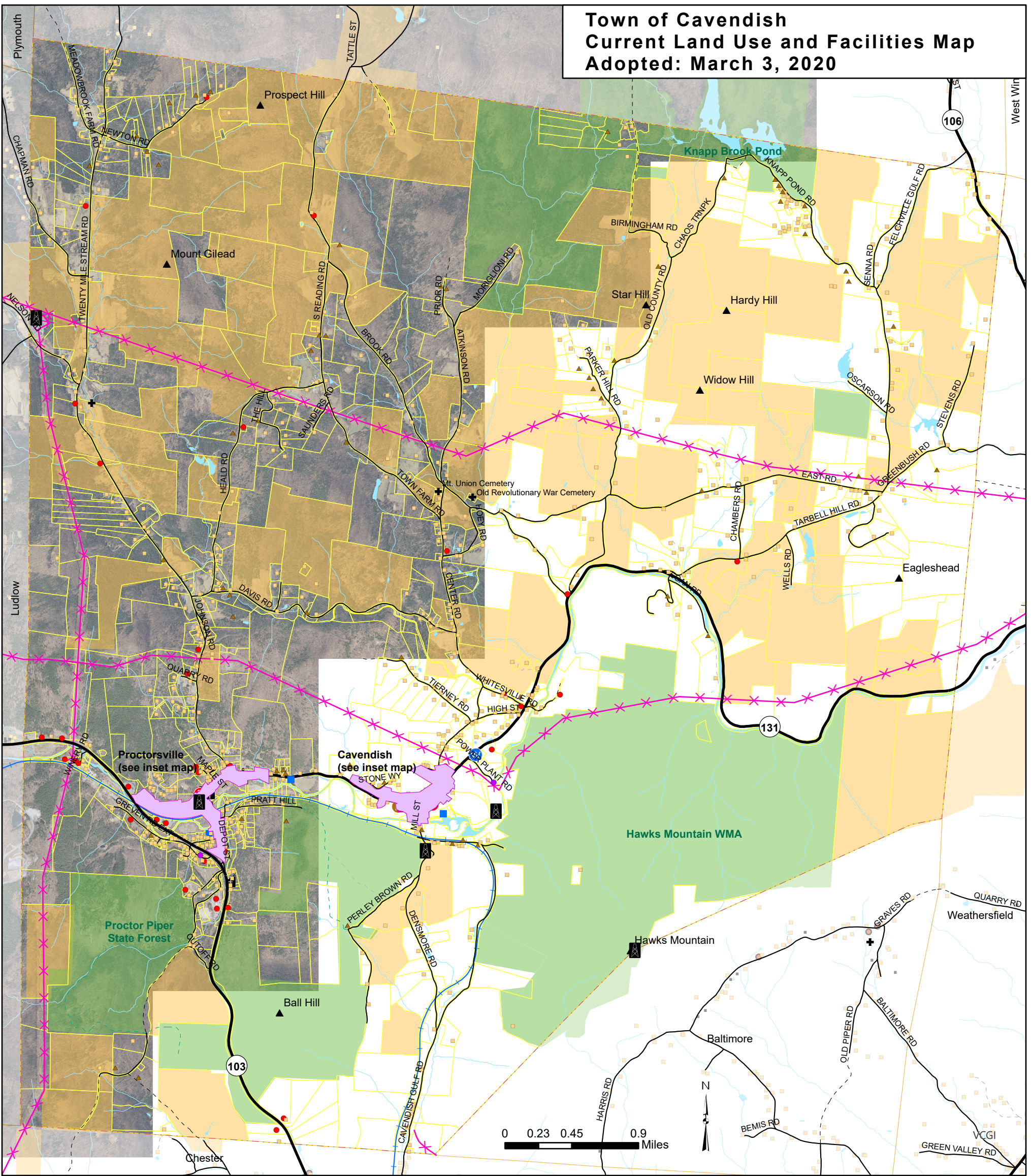
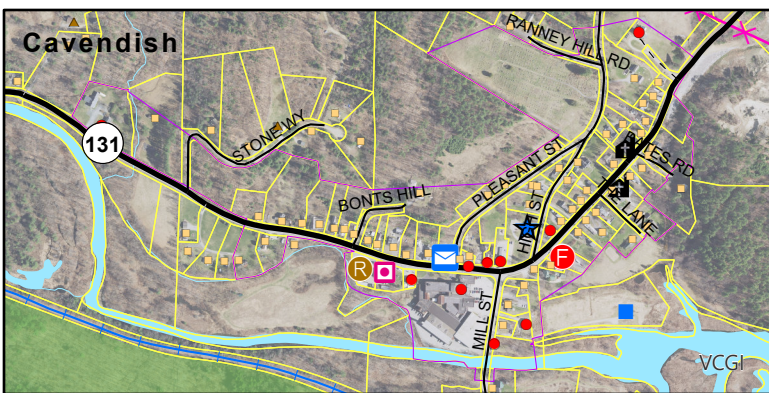
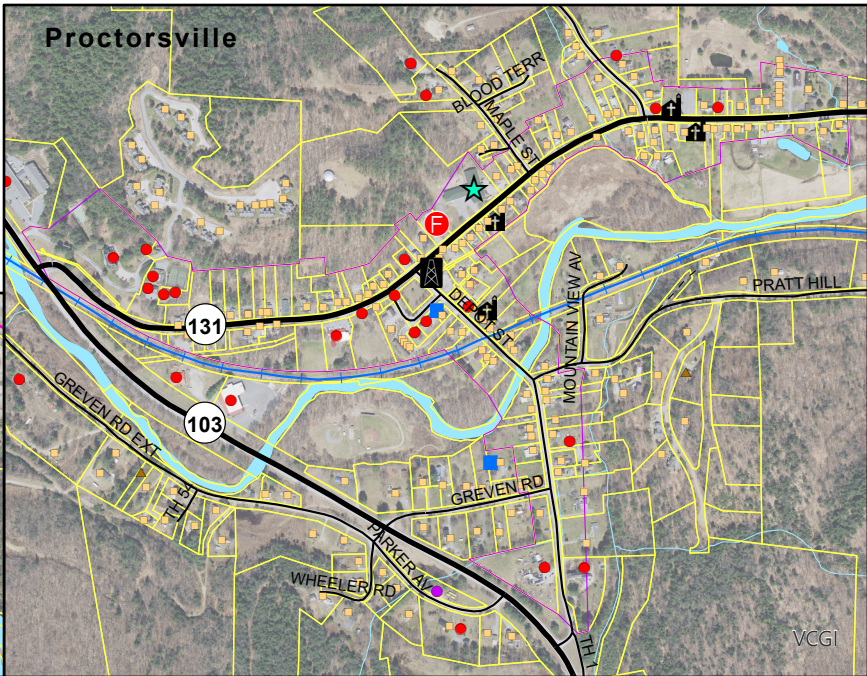


Town of Cavendish Current Land Use and Facilities Map Adopted: March 3, 2020



- ★ Town Office
- ★ Elementary School and Library
- 🚒 Fire Station
- 🚚 Town Highway Garage
- 🏠 Town Water Treatment Plant
- 📧 Other Town Facility
- 📮 Post Office
- 🏠 Historical Society
- 🏠 House of Worship
- 🏠 Industrial
- 🏠 Commercial
- 🏠 Residential
- ▲ Camp
- ✚ Cemetery
- ▲ Hill/ Mountain Summit
- 📡 Telecommunications Tower
- 📡 Transmission Line
- 🚂 Railroads
- 🛣️ VT State Highway
- 🛣️ Class 2 and 3 Town Highway
- 🛣️ Class 4 Town Hwy & Legal Trail
- 🛣️ Private Road
- 🛣️ State Forest Road
- 🌊 Rivers and Streams
- 🟦 Lakes and Ponds
- 🟢 Conserved Lands
- 🟡 Land Enrolled in Current Use
- 🟡 Parcels
- 🟪 Village Center Designation
- 🟪 Cavendish Town Boundary
- 🟪 Other Town Boundary



Data Sources:
Facilities in town (E911 April 2013 and RPC 2014), Buildings (E911 April 2013), Cemeteries (VTrans 2001), Transmission Lines (VCGI 2003 and RPC 2013), Telecommunications Towers (Natural Resources Board 2007 and RPC 2013), Railroads (VTrans 2003), Conserved Lands (ANR 2012), Current Use Lands (Use Value Appraisal (UVA), from County Forester 2012), Waterbodies (VHD 2008), Hill/ Mountain Summit (Unknown source), Road centerline (VTrans 2013), Village Center Designation Boundary (RPC 2013), Town Boundary (RPC 2014 using Parcels 2009), Aerial (NAIP 2009), Parcels (Cartographic Associates 2009).
VT State Plane, Meters, NAD 83
Data depicted on this map are for planning purposes only and are based on best available information. Some of the data do not line up.



P.O. Box 320, Ascutney, VT 05030
802-674-9201 www.swcrpc.org

For planning purposes only
Not for regulatory interpretation
Adopted March 3, 2020