

Natural Resources Screening and Project Locator Map Instructions

All applicants, except for those submitting a proposal for a project identification/assessment project or equipment purchase, are required to submit a map of their project location using the Agency of Natural Resources (ANR) Natural Resources Atlas. The map will allow DEC to review projects in a standardized format, as well as screen for potential natural resource conflicts. All Clean Water Initiative grant-funded projects must avoid impacts to natural resources, including floodplains, river corridors, wetlands, lake shorelands and buffer areas. Contact the Watershed Coordinator for your region with any questions about the project map and potential natural resource impacts. Watershed Coordinator contacts are found here: <http://dec.vermont.gov/sites/dec/files/wsm/mapp/docs/TBP%20Contacts%20Map.pdf>.

The following sections outline steps to create a locator map for your proposed project using pre-selected layers in the Natural Resources Atlas.

Step 1: Open the Natural Resources Atlas and Zoom to your project location

1. Open the Vermont Natural Resources Atlas: <http://anrmaps.vermont.gov/websites/anra5/>

*TIP: If you are new to using the ANR Atlas, here is the link to a great webinar on the Atlas features.

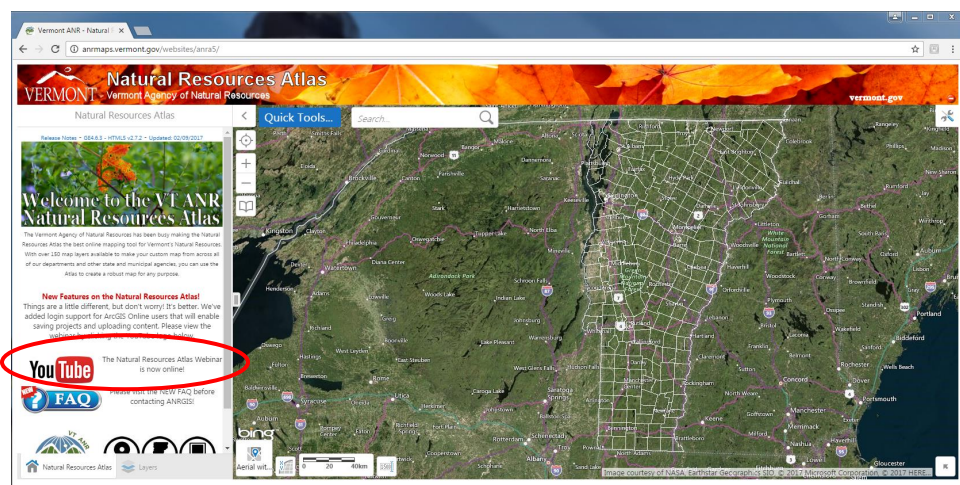


Figure 1. Homepage of Natural Resources Atlas

2. Zoom to your project's location using the "Quick Tools" button, "Zoom to a Town," or "Find an Address" tool; a stormwater mitigation project at the Cabot School in Cabot, VT is used as an example here

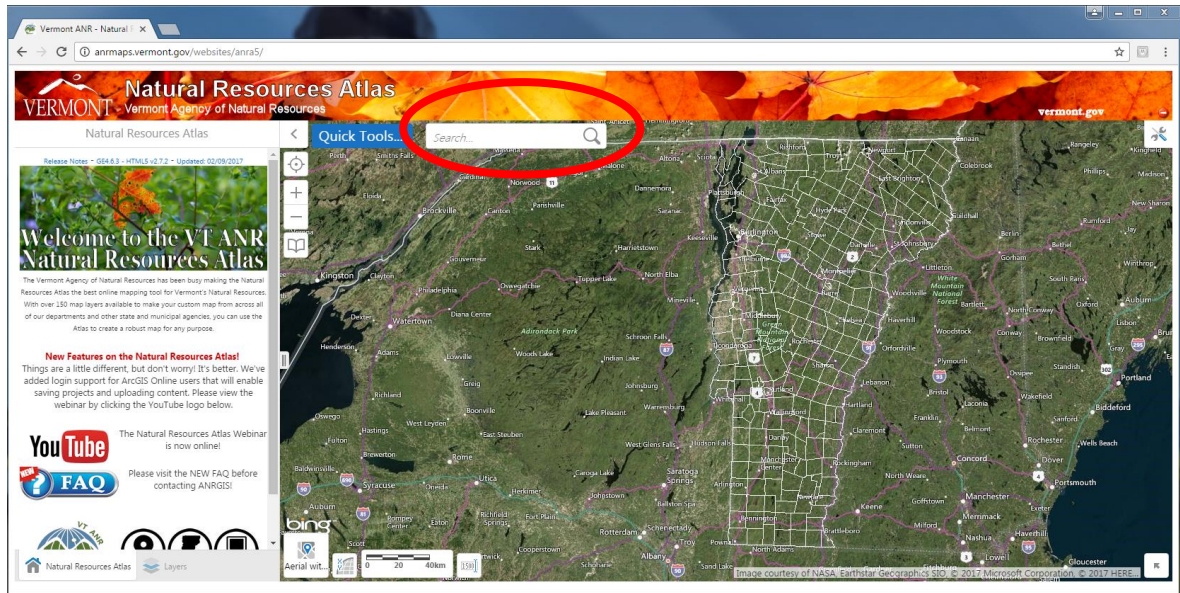


Figure 2. Quick Tools Button

Step 2: Plot a point on your project's location

1. Zoom in to the project's extent; Right-click on the project's location site

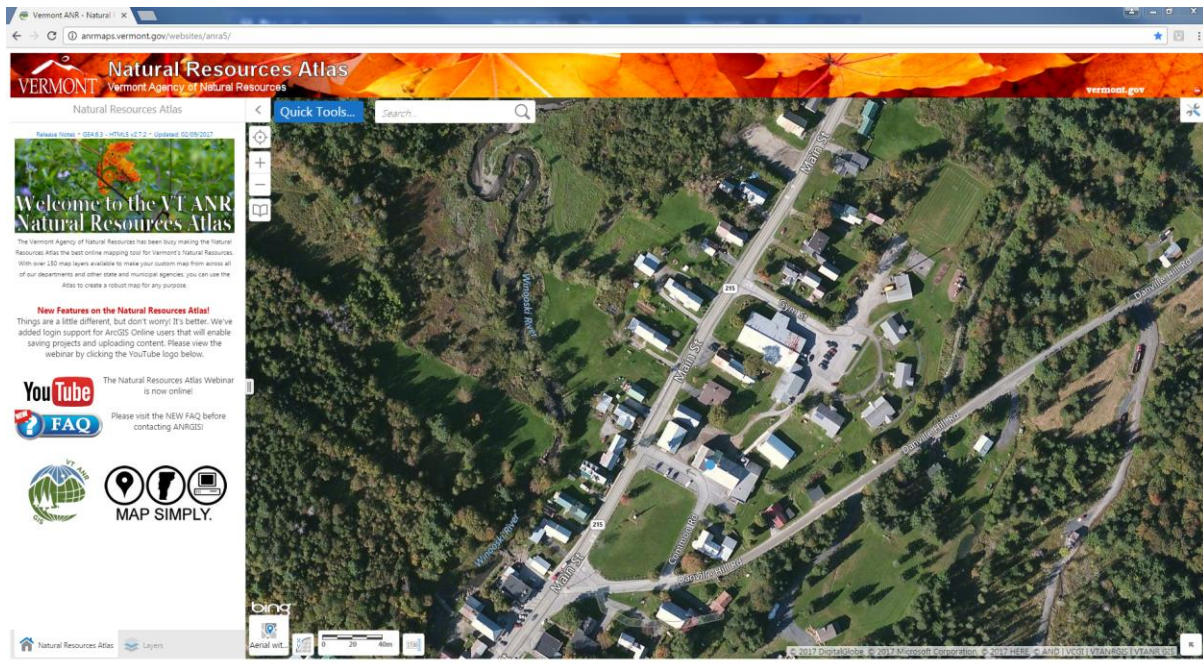


Figure 3. Zoom to project extent

2. Select the tool icon in the upper right corner of the map to display the tool bar

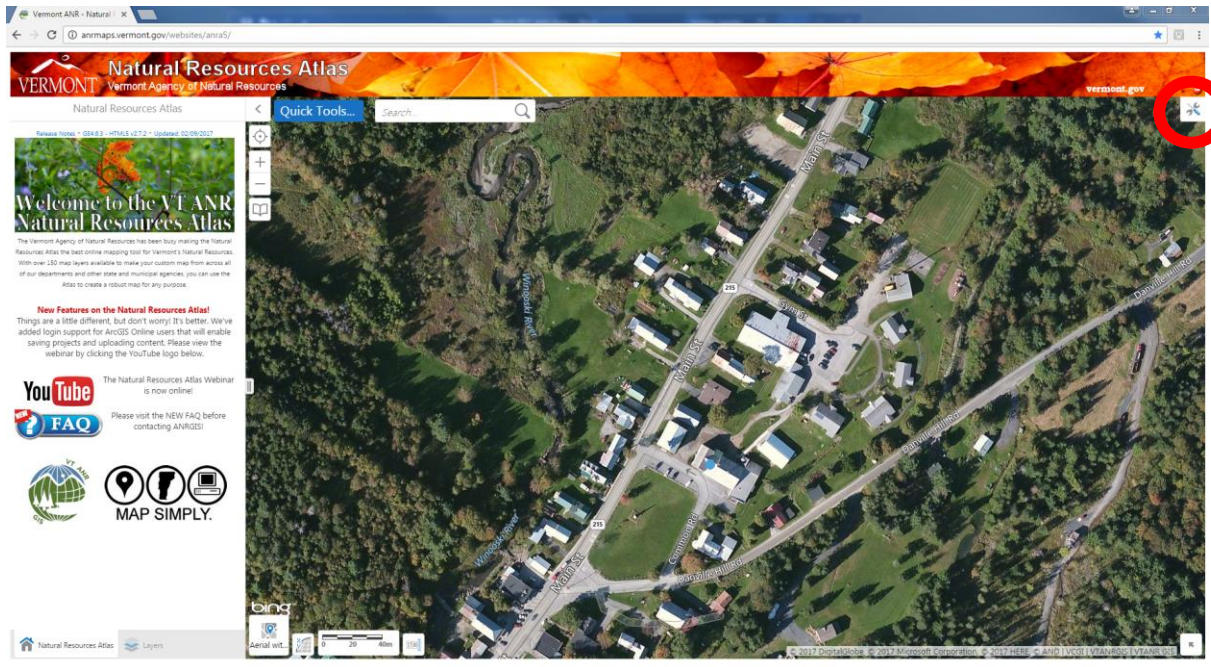


Figure 4. Right-Click Pop-up Display

3. Select the “Measurement” tab from the Atlas tool bar

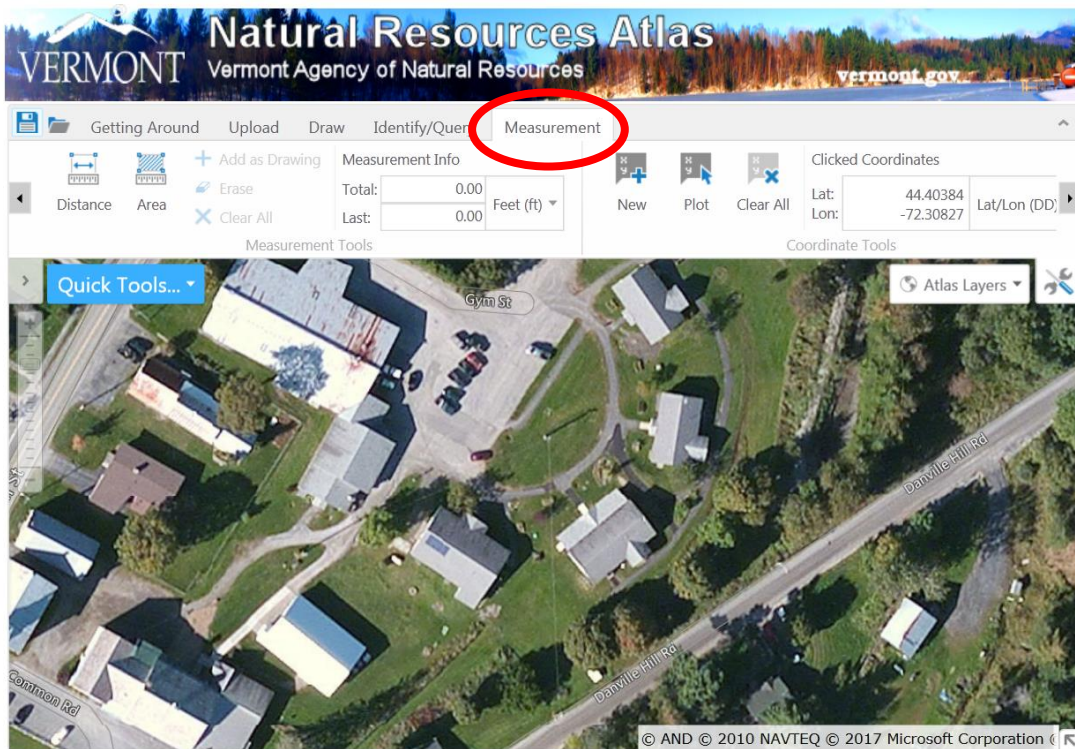


Figure 5. Measurement tool bar

- 4. Plot your project location and coordinates by selecting the “Plot” button and clicking the project location on the map

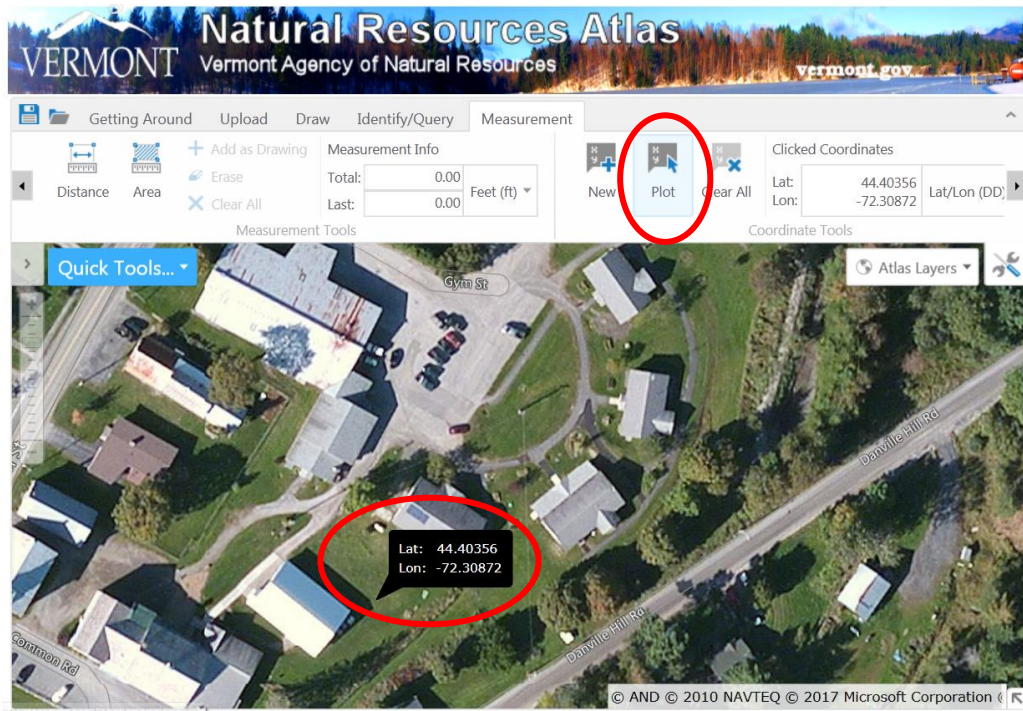


Figure 6. Measurement tool bar to plot coordinates

- 5. If you already know the project coordinates, you may also select the “New” button and enter project the latitude and longitude to plot your project location

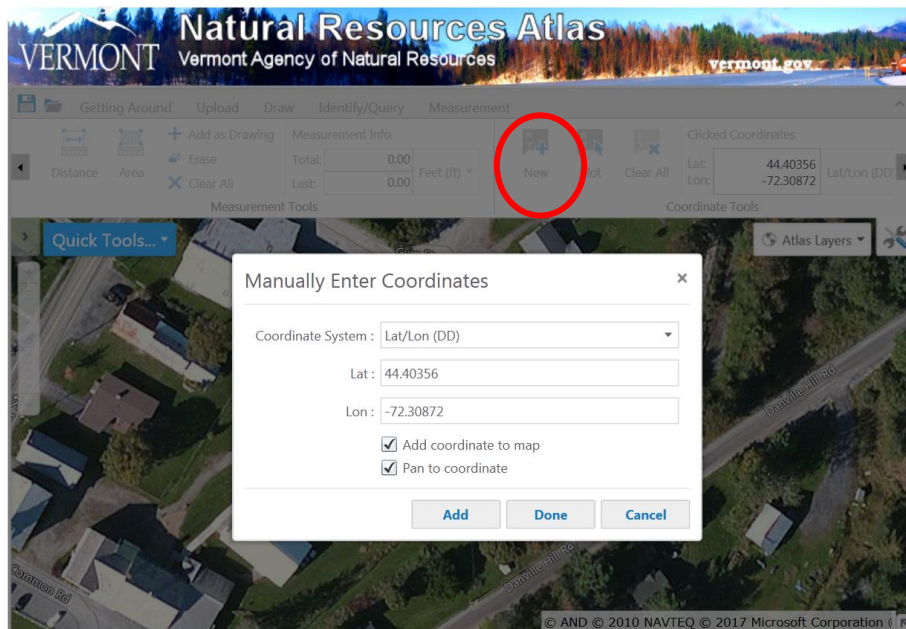


Figure 7. Measurement tool bar to manually enter project coordinates

6. Observe a point on the map with its corresponding coordinates

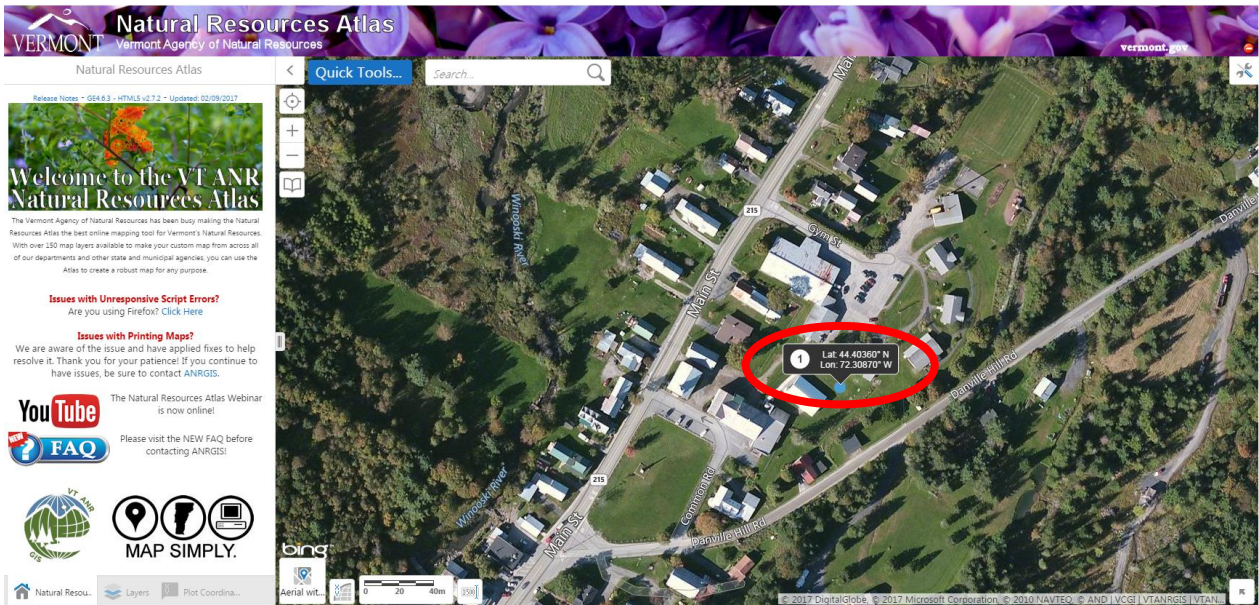


Figure 8. Locator Map

Step 3: Add the Project Planning and Review Data Layers

1. Click on the “Layers” tab at the bottom left hand corner of the screen

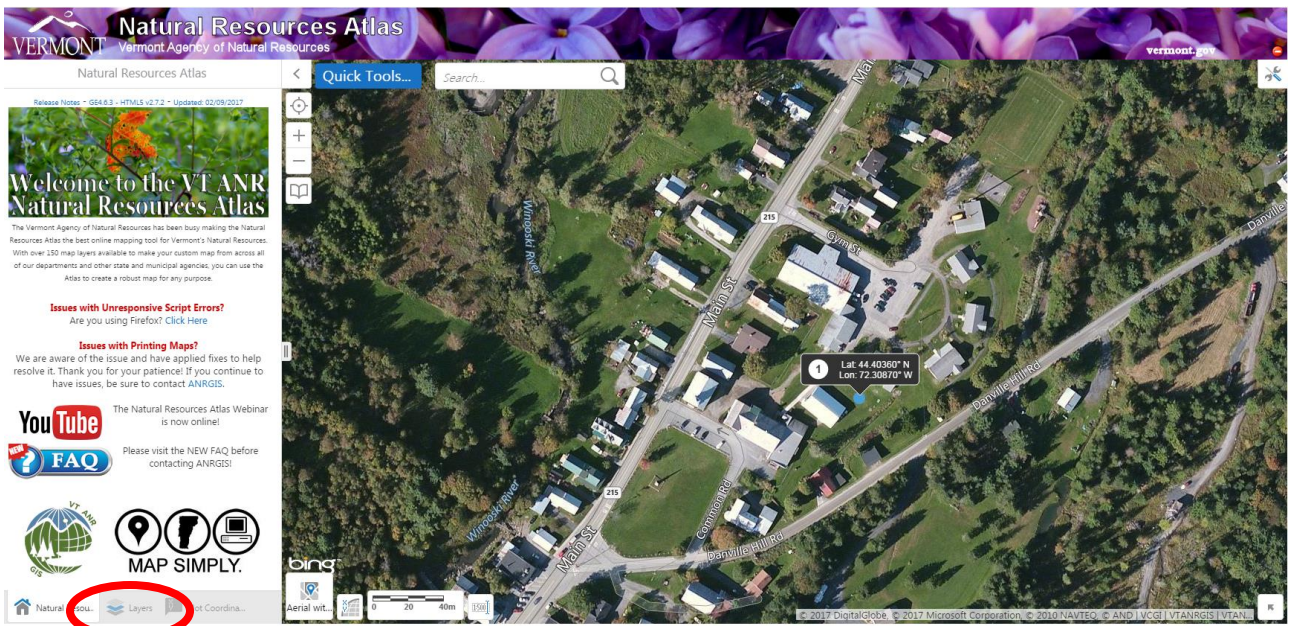


Figure 9. Layers tab location

Note that the layer to activate in ANR Atlas is now named “Clean Water Initiative Program Grant Screening.”

- From the dropdown menu “Atlas Layers,” select the “Ecosystem Restoration Grant Screening” layer theme (located toward the bottom of the list)



Figure 10. How to find the Ecosystem Restoration Grant Screening layer theme



Figure 11. Project location with the Ecosystem Restoration Grant Screening layer theme turned on

Step 4: Create a Printable Map of the Project Area

1. Click on the “Toolbar” in the upper right hand corner of the map view. Be sure to capture the entire project area

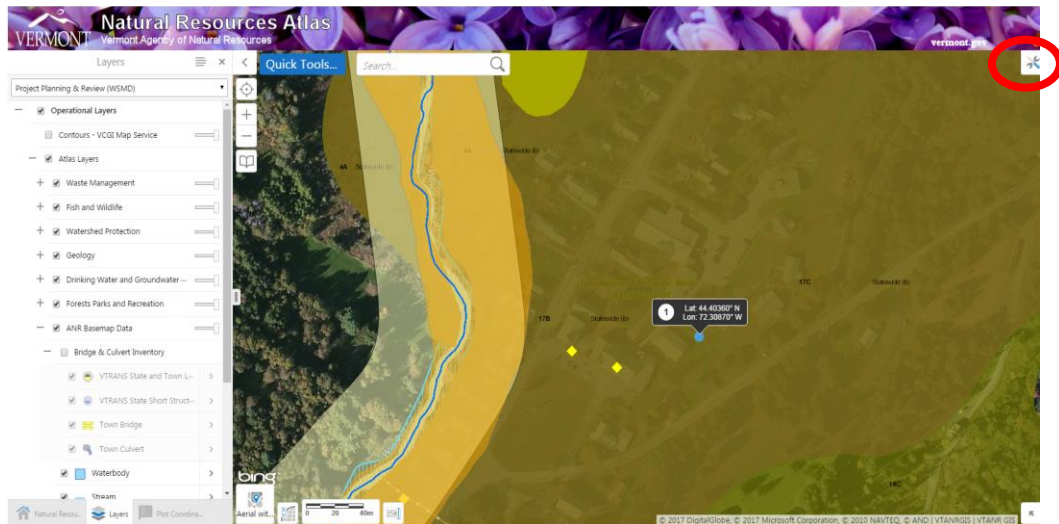
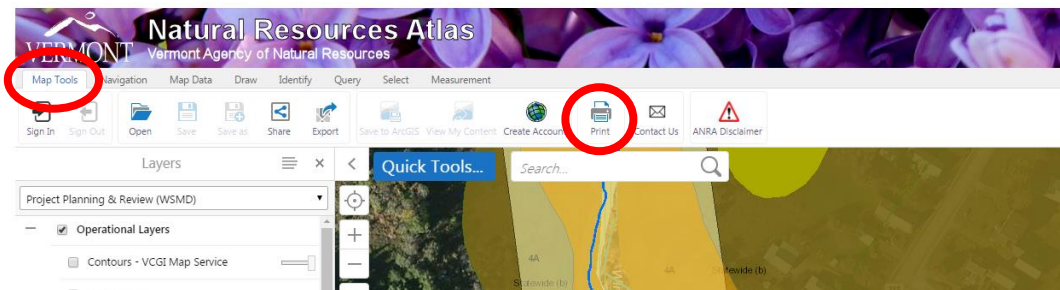


Figure 12. Location of toolbar

2. If using Chrome, select the “Map Tools” tab from the toolbar and select the “print” button
If using Internet Explorer, select the “Getting Around” tab and select the “print map” button

Chrome:



Internet Explorer:

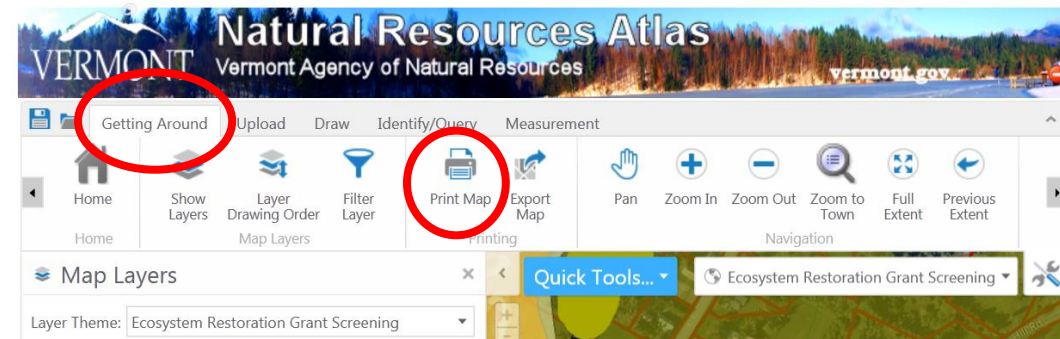


Figure 13. Print map tools

3. Next, you will see the ‘Print Map’ menu of options; keep all default settings (do not change layout, output format, resolution, grid, and map scale)
4. Add the title of your grant application in the “Title” box and any notes (if applicable)
5. Click “Print” to create a PDF of your project map

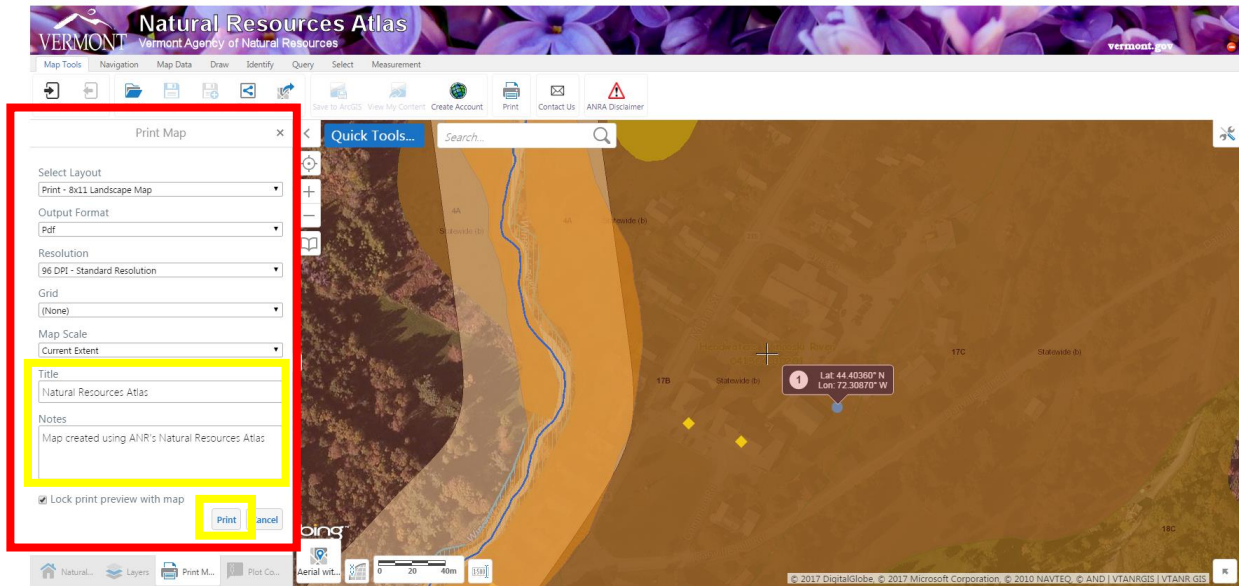
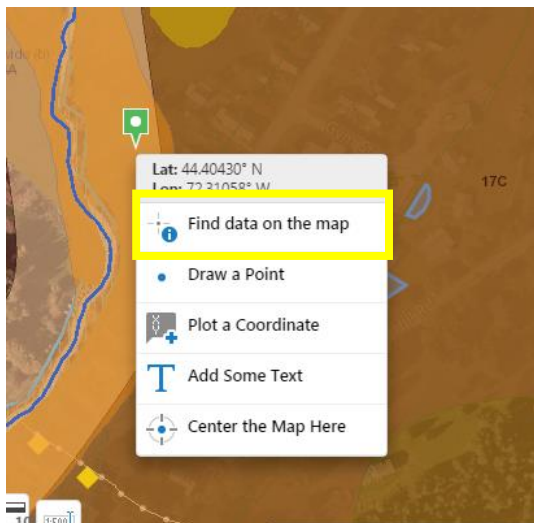


Figure 14. Print Map menu of options

Step 5: Identify Potential Natural Resource Conflicts at the Project Site

1. Right-clicking on the map will show you the following pop-up box
 If using Chrome, select “Find data on the map”
 If using Internet Explorer, select “What’s Here”

Chrome:



Internet Explorer:

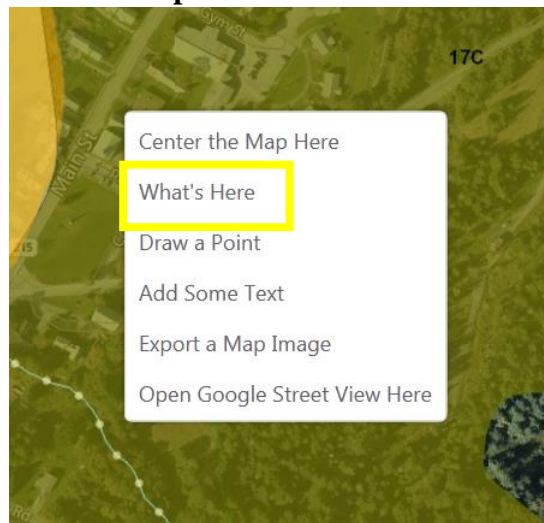


Figure 15. Finding data on the map to screen for potential natural resource conflicts

- The “Find data on the map” (Chrome) and “What’s Here” (Internet Explorer) selections will generate a left-hand display of all layers that are in your project location

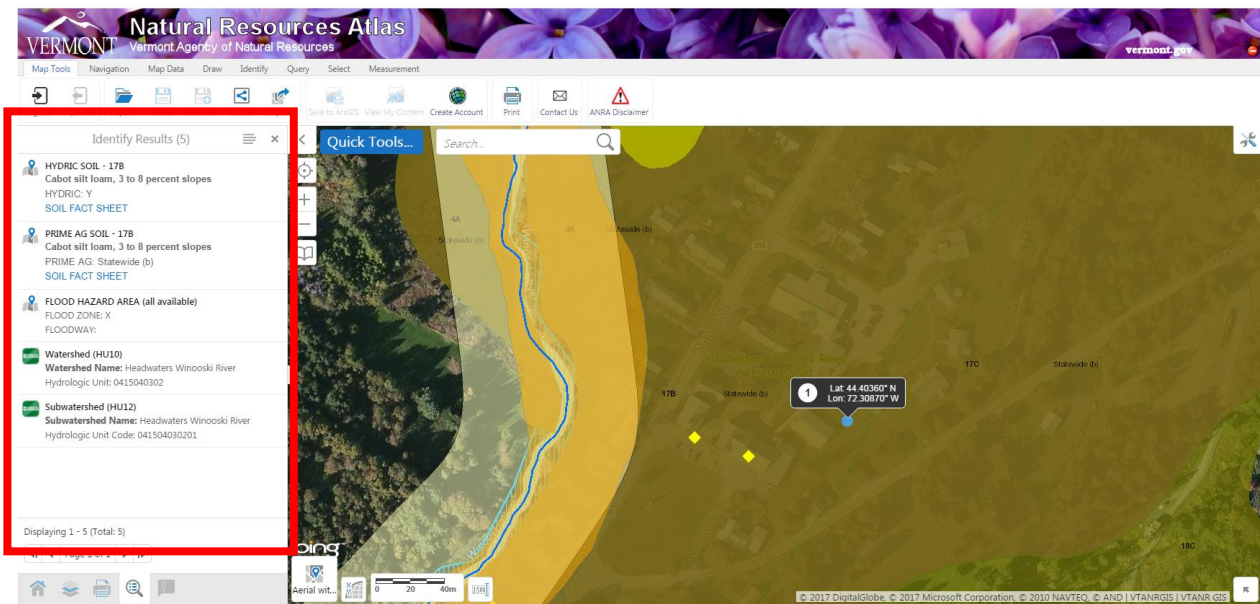


Figure 16. "Find data on the map" results window

- Scroll through this listing to identify natural resource conflicts located near your project
- If there are potential conflicts, discuss with the Watershed Coordinator and/or indicate in your application how you will address these potential conflicts